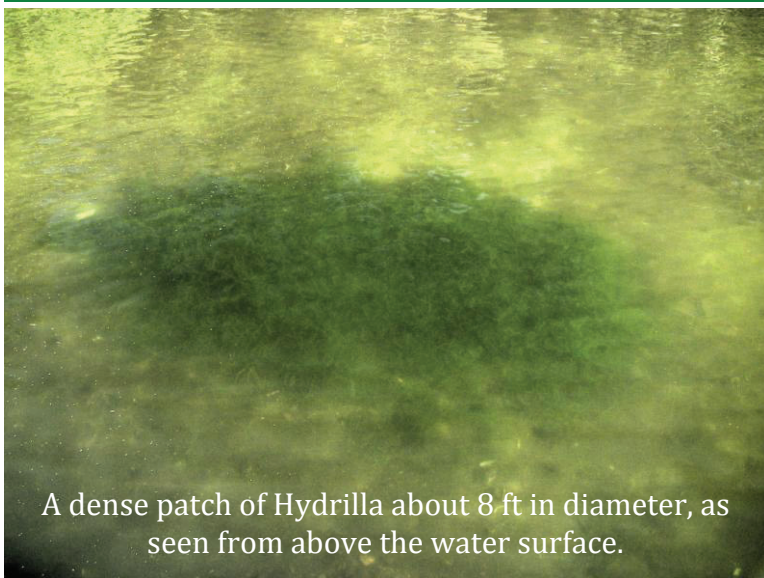


Indian Ponds Hydrilla Watch

Twelve patches of the invasive aquatic plant Hydrilla were discovered in four locations around Mystic Lake in August 2010. Volunteers from the Indian Ponds Association, working with Mass DCR, removed all of the known patches of Hydrilla in September. A special removal procedure was followed to avoid spreading any fragments which can start new patches.

Hydrilla is one of the most problematic invasive plants due to its rapid growth and ability to densely fill the water column up to the surface, thereby impeding swimming, boating, and fishing.

All users of the Indian Ponds need to be on the lookout for new patches or fragments of Hydrilla in any of the ponds. Vigilance is critical to insure that this menace to the ponds is not allowed to become established. If you find any suspected Hydrilla, note the exact location, keep a sample wet, and notify Bob Nichols (428-2887) or Holly Hobart (428-0235). **Do not attempt to remove Hydrilla on your own or you may cause it to spread.**

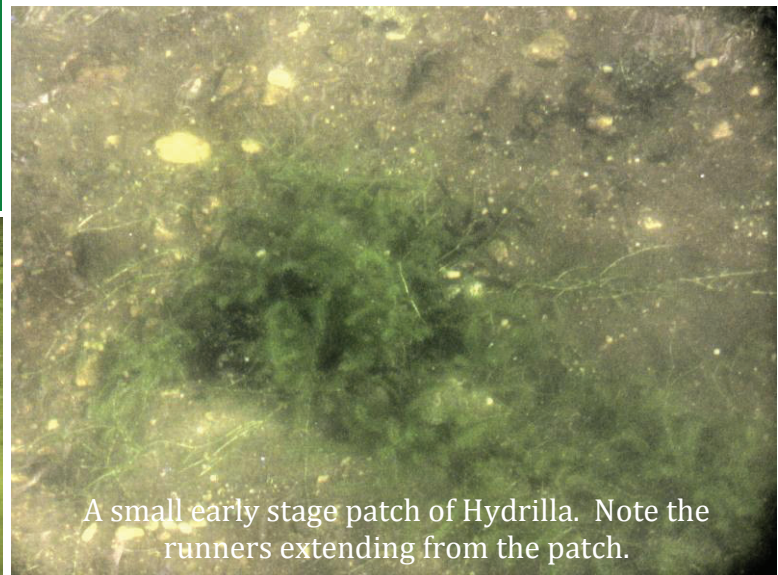


A dense patch of Hydrilla about 8 ft in diameter, as seen from above the water surface.

The areas where Hydrilla patches were removed have been covered with benthic barriers to prevent regrowth. These barriers consist of dark screen material framed with PVC pipe and weighed down with sand bags (see photo to the right). **These barriers must not be disturbed or moved.** Each spring, the barriers will be removed for a period of time to allow any remaining Hydrilla tubers to sprout, at which point the barriers will be replaced to kill off the sprouting plants. This process will continue for several years to insure eradication.



Hydrilla (above left) is similar in appearance to the native waterweed Elodea (above right). Hydrilla typically has 5 leaves per whorl on the stem, as opposed to 3 leaves per whorl for Elodea. Hydrilla leaf margins have tiny serrations, visible without magnification, while Elodea leaves are smooth edged.



A small early stage patch of Hydrilla. Note the runners extending from the patch.



Benthic barrier where Hydrilla was removed.